

Maritime Terminal, Tilbury
 Collection Plan

Loading:

Monday – Friday 0800-1600hrs
 Saturday/Sunday Check

PPE Requirements:



Additional Information:



Reporting/Arrival:



On arrival stop at weighbridge for tare weight ticket



Park vehicle outside warehouse

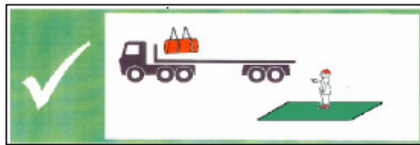


Report to drivers reception

When instructed reverse into loading bay

Loading/Securing:

Stand in green area during loading



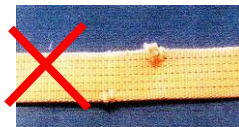
Minimum 9 securing points on each side
 18 Total



Minimum 12 Straps LC 2000 daN



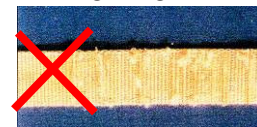
NO CUTS



NO KNOTS



NOT WORN

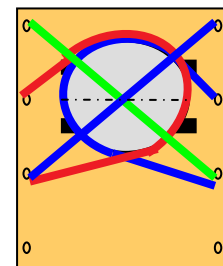


LOADS MUST BE SECURED IN THE LOADING BAY – PLEASE HAVE STRAPS READY BEFORE ENTERING THE BAY

STEEL COILS ON PALLETS

4 straps per coil

Ratchets to rear of coil



STEEL SHEETS IN BULKS

