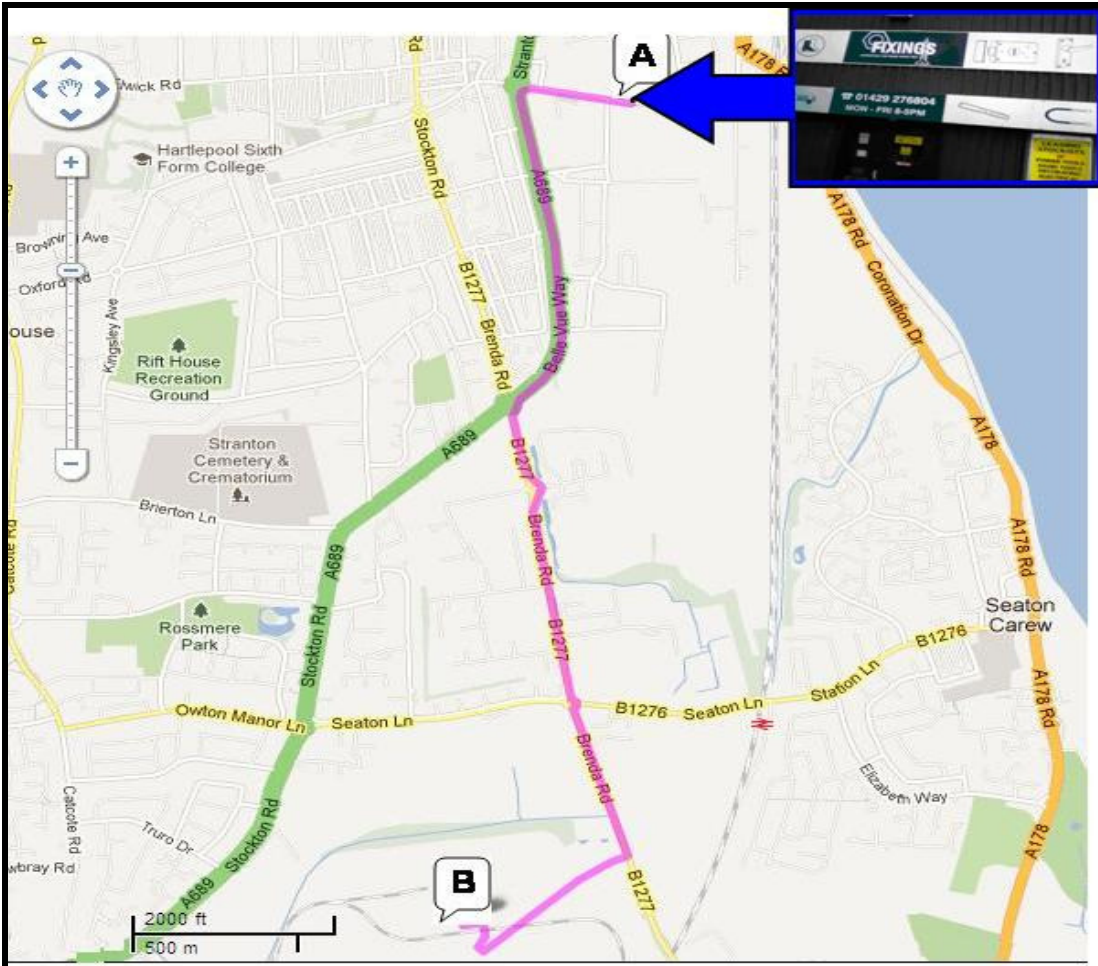


Directions from:
Fixings, Burn Road, Hartlepool TS25 1PL
To Hartlepool Works, Brenda Road, Hartlepool TS25 2EG



Distance: **2.5 miles**, about **6 minutes**
Start: **TS25 1PL**

- | | |
|---|------------|
| 1 Start out at Fixings, Burn Road | 0.1 miles |
| 2 At roundabout take the 1st exit onto the A689 (signposted The South) | 0.21 miles |
| 3 At roundabout take the 1st exit onto Brenda Road - B1277 (signposted Port Clarence) | 0.95 miles |
| 4 At roundabout take the 2nd exit onto Brenda Road - B1277 | 1.14 miles |
| 5 At roundabout take the 2nd exit onto Brenda Road - B1277 (signposted Port Clarence A178) | 1.64 miles |
| 6 Turn right | 2.03 miles |
| 7 Turn right | 2.37 miles |
| 8 Turn left | 2.45 miles |
| Finish: Arrive at Hartlepool Works, Brenda Road, TS25 2EG | 1.39 miles |