

Driving on site with curtains and doors open

There have been some recent incidents of Drivers moving between loading bays with curtains and doors open and not secured back.

This creates hazards, blind arcs and distractions for the Driver which can lead to incidents such as shown below. Fortunately so far, this only resulted in damage to property but the potential for harm to personnel was high. It also creates hazards to other road users with loose curtains having the potential to hit anything that is in the way. Potential for damage to own trailer is also increased with the possibility of 'Snagging' on fixed structures.



ALWAYS SECURE CURTAINS, DOORS AND LOOSE EQUIPMENT CORRECTLY BEFORE MOVING OFF!

Roof Poles

Our main focus for 2012 still remains Drivers should have and use roof poles correctly to open and close sliding roofs. However, we do understand that roof poles can be lost or stolen from trailers which leaves the Driver short unexpectedly.

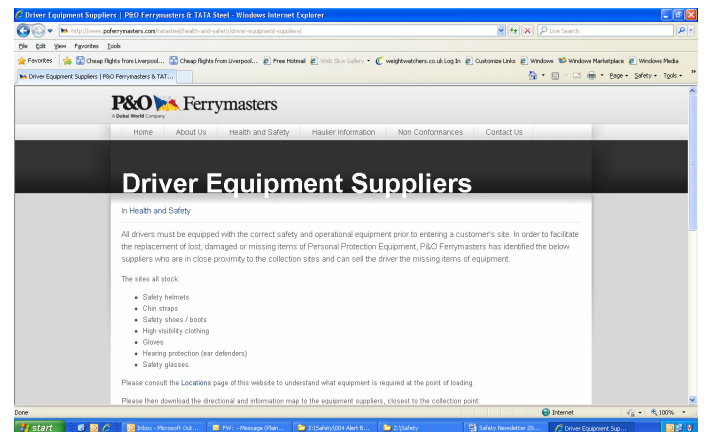
If this happens, the Driver must report this immediately to their supervisor to arrange replacement.

For guidance we have implemented the following.....

Website updates – PPE & Roof Pole suppliers

We have identified the closest PPE suppliers to the Tata sites and have now put their details onto our website to enable hauliers to direct Drivers to should they not have their full requirement of PPE or a Roof pole with them.

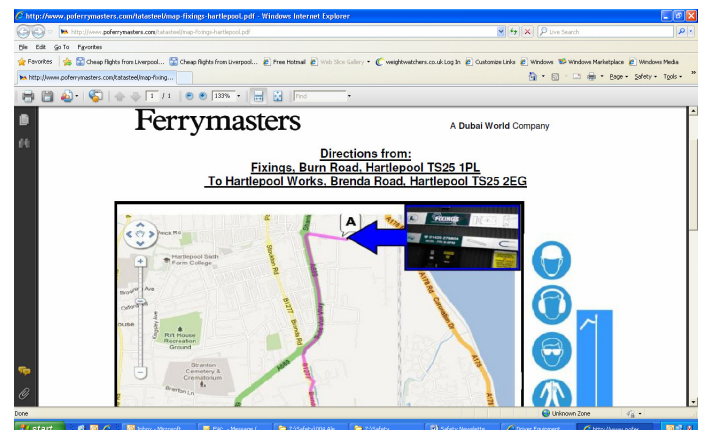
All suppliers accept Euros as payment.



Please use the below link to access the folder:

<http://www.poferrymasters.com/tatasteel/health-and-safety/driver-equipment-suppliers/>

Click on the relevant Supplier and a map will appear with their address and postcode details:



THERE SHOULD BE NO REASON OR EXCUSE FOR ANY DRIVER TO NOW ARRIVE AT TATA WITHOUT PPE OR ROOF POLE!!!

Proactives

One of our hauliers has instructed all their Drivers to visit the PPE shop recommended by P&O prior to arriving at Tata sites and has implemented fines on the Drivers who are still non conforming.

This has had the massive impact of reducing the haulier's PPE non conformance % from 30% in March to just 12% in April, with the % declining further still during May.