

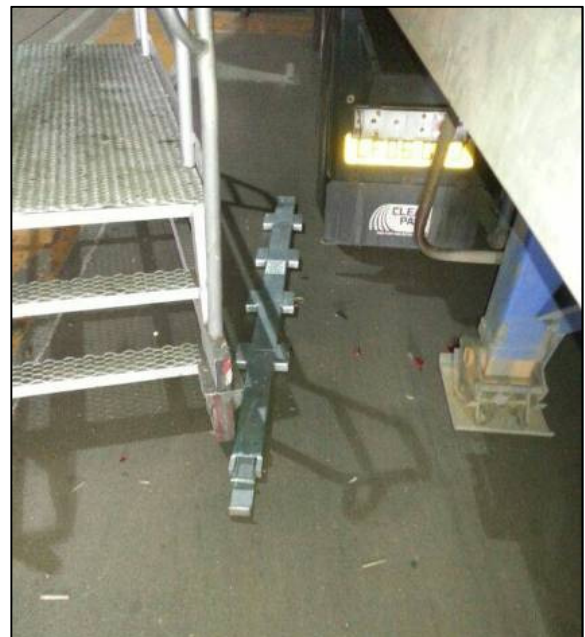
AB14 10 6th August 2014

Driver Injured by Falling Roof Support Post

What Happened:

The IP (driver) was releasing a container support column on a swap body trailer as part of the normal loading process. The column became detached from its runners and fell suddenly to the floor hitting the IP on the fingers of his right hand.

The IP was taken to the local A&E Department, X-rays revealed no broken bones but sustained severe bruising. The IP returned to work the next day



Findings:

- The roof support pin was not in place. The O/S curtain roller had been repaired but no sign off documentation detailing repair and checks was available.
- A spot check carried out on another incoming swap body of the same haulier revealed a roof support pin was missing.

Recommendations:

- Hauliers to regularly maintain and check condition of the swap body container support columns, ensuring the pin is in place.
- Include the support column and pin checks on daily equipment checks.
- Ensure robust defect reporting procedures are in place, that the procedure has been communicated to all drivers and they understand how and when to report a defect.
- Keep a record of all repairs and ensure they are checked and signed off before the equipment is returned to use and the documentation can be made available in the event of an incident.