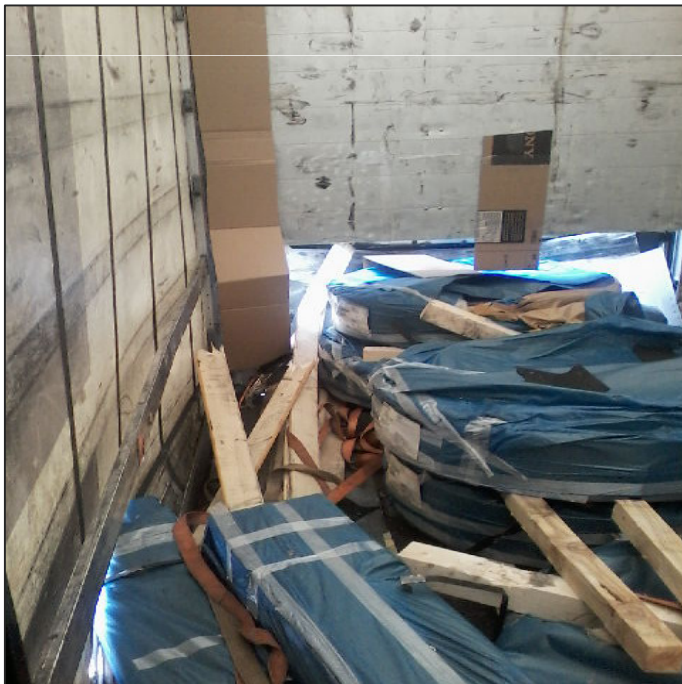


Load Shift – Narrow Strip Product

What Happened:

En route to customer the driver has braked heavily to avoid collision with another truck. The Narrow Strip coils and bundles being carried have shifted forward piercing the trailer headboard and through into the base of the rear part of the unit cab. Some of the product has sheared off to the side and cut through the trailer curtain.

There were no injuries.



Findings:

- The product was not loaded to the headboard.
- Gaps between product.

Recommendations:

- Load configuration and restraint to be reviewed by the loading customer.

•Drivers and hauliers should:

- Where possible product **must be** loaded against the headboard / stanchions or false headboard.
- Gaps **must be** closed up to prevent movement.
- Edge protection **must always** be applied between the strap and sharp surfaces.

<http://www.poferrymasters.com/tatasteel/tis-0005-webbing-strap-edge-protection.pdf>