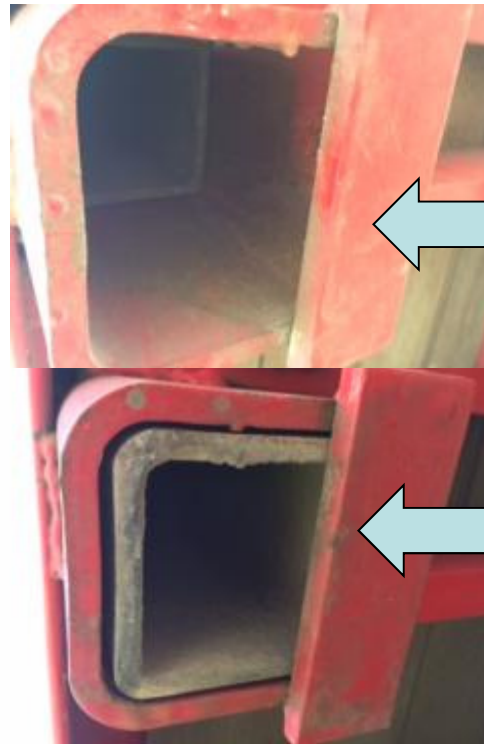


Driver Injury – Cut and Bruising to Chin and Neck

What Happened:

On 07/06/2016 the IP arrived to collect a loaded flatbed trailer. The IP noticed all the stanchion posts had been inserted with the exception of the rear O/S post which had been placed on the bed next to the load.

As the IP inserted the post into the socket the base of the post suddenly came out of the socket. As it came out of the socket the top of the post was leaning backwards and the bottom of the post flipped up and hit the IP hard beneath his jaw bone, causing a deep cut under his chin and bruising and swelling of the Adams apple area. IP received first aid treatment on site but was able to carry on with his duties.



Post is too big for socket, does not fit to base

Correctly fitting post

Findings:

- IP had worn all PPE and followed his companies SWP
- Loading site had forced the other posts in and were not able to be removed by hand.
- Previous driver had failed to report any problems with the stanchions.
- Stanchion posts were too big for sockets

Actions:

- ✓ Ensure a defect reporting procedure is in place and is understood by all drivers.
- ✓ Ensure all reported defects are acted on and repaired promptly.
- ✓ If you see an issue with a trailer, report it immediately – don't leave it for the next driver **because it could be you!**