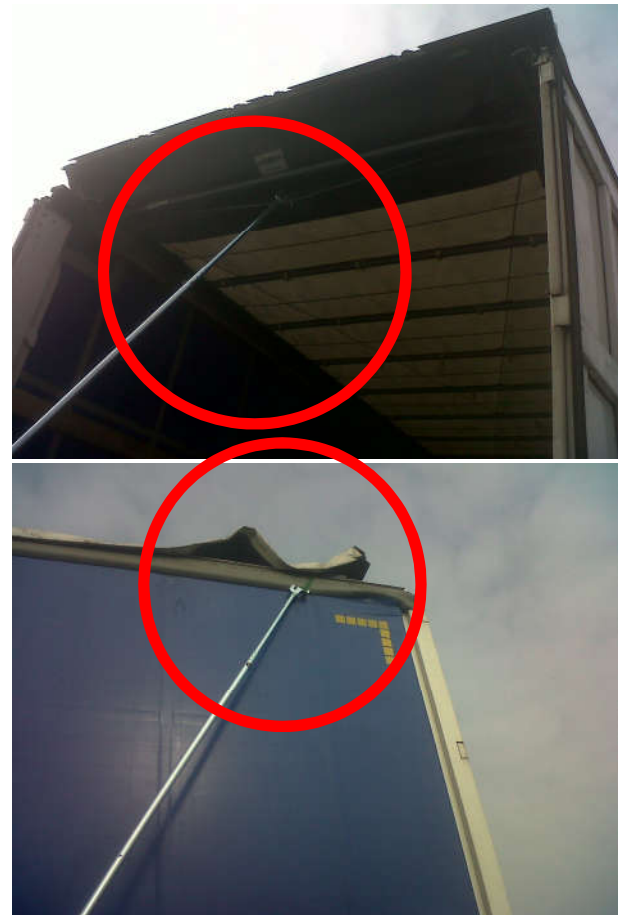


## Incorrect Operation of Sliding Roof

### What Happened:

Whilst opening trailer sliding roof driver has incorrectly attached roof pole to the roof release chord to open the roof, under tension/ runner stoppage, the chord has parted causing driver to fall and sustain injury.



### Actions:

- ✓ Never! use the roof release cord to fully open the roof.
- ✓ Release the pins then attach the roof pole to the trailer side tabs or roof bar.
- ✓ Always Check equipment before use.
- ✓ Ensure trailer roofs receive regular inspection and lubrication.
- ✓ Ensure drivers are trained in the correct methods of sliding roof operation.
- ✓ Check ground conditions and Trailer Trim before operation.
- ✓ Guidance is available at [www.poferrymasters.com/carrierinfo](http://www.poferrymasters.com/carrierinfo) .