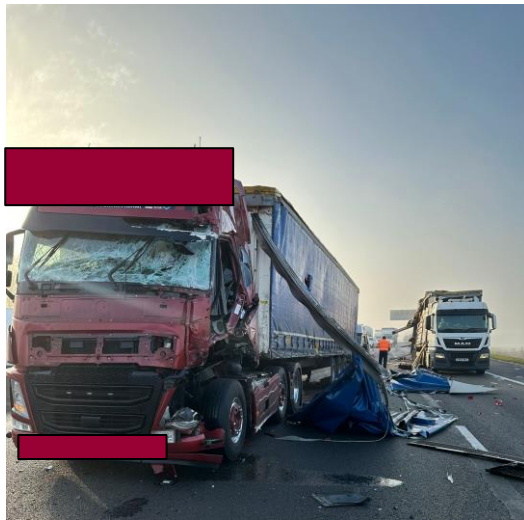


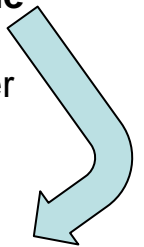
Load Securing

Sadly incidents and accidents do happen.

The impact of an incident can be reduced through the professional, positive and proactive actions of a driver.



When this happens, make sure the result is this.....
(Actual picture from inside this trailer after the incident)



And not this, or worse.....



Be the best . . .

- Follow the load restraint guidance provided at the location (if available)
- If none, then general guidance and product guidance is available from:
- [Load securing: vehicle operator guidance - GOV.UK \(www.gov.uk\)](http://www.gov.uk)
- [Cargo securing for road transport - Publications Office of the EU \(europa.eu\)](http://europa.eu)
- Check the load restraint and re-tighten straps during the journey